

SINGLE PHASE MODELS:

MODELS J2945-AV & JD2945-AV			
VOLTAGE	208 / 1 / 50-60		
KW	15.2		
FULL LOAD AMPS	L1	L2	L3
	73.3	73.3	
POWER SUPPLY	FUSE	WIRE	
	100A	1 AWG	
ELEMENTS	QTY	OHMS	
(E-J-2300/2V)	10	6.83	
VOLTAGE	220 / 1 / 50-60		
KW	16.1		
FULL LOAD AMPS	L1	L2	L3
	73.3	73.3	
POWER SUPPLY	FUSE	WIRE	
	100A	1 AWG	
ELEMENTS	QTY	OHMS	
(E-J-2300/4V)	10	7.23	
VOLTAGE	240 / 1 / 50-60		
KW	15.4		
FULL LOAD AMPS	L1	L2	L3
	64.1	64.1	
POWER SUPPLY	FUSE	WIRE	
	90A	2 AWG	
ELEMENTS	QTY	OHMS	
(E-J-X001/31)	10	9.01	

THREE PHASE MODELS:

MODELS J2945-AV & JD2945-AV			
VOLTAGE	208 / 3 / 50-60		
KW	15.2		
FULL LOAD AMPS	L1	L2	L3
	38.1	50.8	38.1
POWER SUPPLY	FUSE	WIRE	
	70A	4 AWG	
ELEMENTS	QTY	OHMS	
(E-J-2300/2V)	10	6.83	
VOLTAGE	220 / 3 / 50-60		
KW	16.1		
FULL LOAD AMPS	L1	L2	L3
	38.1	50.8	38.1
POWER SUPPLY	FUSE	WIRE	
	70A	4 AWG	
ELEMENTS	QTY	OHMS	
(E-J-2300/4V)	10	7.23	
VOLTAGE	240 / 3 / 50-60		
KW	17.6		
FULL LOAD AMPS	L1	L2	L3
	38.1	50.8	38.1
POWER SUPPLY	FUSE	WIRE	
	70A	6 AWG	
ELEMENTS	QTY	OHMS	
(E-J-2300/3V)	10	7.88	

1 PHASE CONTROL PANELS:

MODEL	(AUTO/MANUAL)	WIRING DIAGRAM
J245V	(MANUAL)	K262-107
JD245V	(AUTO)	K262-157

3 PHASE CONTROL PANELS:

MODEL	(AUTO/MANUAL)	WIRING DIAGRAM
J245V	(MANUAL)	K262-108
JD245V	(AUTO)	K262-158

SEE CONTROL PANEL WIRING DIAGRAM FOR WIRING CONNECTIONS TO KILN ZONE RECEPTACLES

NOTES:

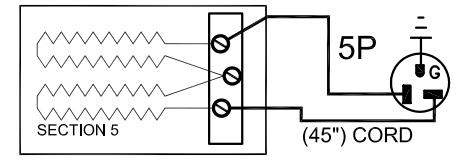
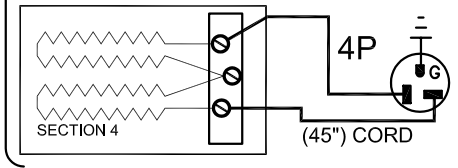
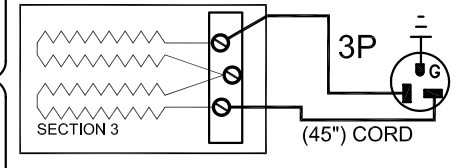
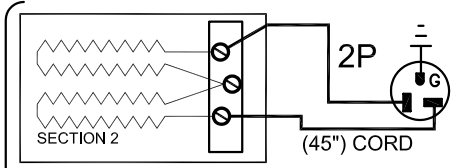
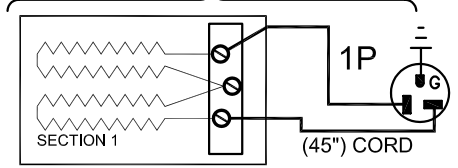
Industrial & commercial applications may require the installation of a LOCKOUT/TAGOUT device to prevent the Kiln from operating during maintenance.

This Kiln is recommended to be wired & connected to an approved U. L. & NEC configured disconnect switch and properly fused according to the KW load specification listed on the Kiln Nameplate. L&L Kiln Mfg., Inc., also recommends fuses rather than circuit breakers to prevent nuisance tripping.

ELECTRICAL PARTS LIST

SYMBOL	QTY	DESCRIPTION	CUSTOMER PART NO.
P	5	45" PLUGS NEMA 6-20P	L-JC45/00

KILN ASSEMBLY



SECTIONS CONTROLLED BY EACH OF THE 'DYNA-TROL' OUTPUTS:
OUTPUT #1 (TOP)
OUTPUT #2 (CENTER)
OUTPUT #3 (BOTTOM)

Output Numbers refer to Dyna-Trol Outputs on Automatic Kilns only.



CAUTION: DO NOT PLUG KILN SECTIONS DIRECTLY TO LINE VOLTAGE

REV#	DATE	REVISION DESCRIPTION
0	9/18/09	FIRST ISSUE

L&L Kilns
hotkilns.com
505 SHARPTOWN ROAD
SWEDESBORO, NJ 08085
PHONE: (856) 294-0077
FAX: (856) 294-0070

TITLE: **JUPITER KILN WIRING DIAGRAM
MODEL J2945-AV and JD2945-AV
FOR NICKLE CHROME SERIES ELEMENTS
1 or 3 PHASE KILN ASSEMBLY
5 SECTIONS, No Power Bottom**

DRAWN BY	B.N.M.		REV. CODE	DRAWING NO.
DATE	9/18/09	SCALE	1 = 8	0 KSH090904
CHK	S.J.L.	APP		
JOB NO.	SER NO.		SHEET NO.	OF
FILE NAME	L:\E\KILN\MISC ORDERS KSH090904.dwg		MADE FROM	VK039-120