

SINGLE PHASE MODELS:

MODELS J230V-PB & JD230V-PB		
VOLTAGE	208 / 1 / 50-60	
KW	10.7	
FULL LOAD AMPS	L1	L2 L3
	51.3	51.3 X
POWER SUPPLY	FUSE	WIRE
	70A	4 AWG
ELEMENTS	QTY	OHMS
(E-J-2300/2V)	6	6.83
(E-J-2300/20)	1	28.4
VOLTAGE	220 / 1 / 50-60	
KW	11.3	
FULL LOAD AMPS	L1	L2 L3
	51.3	51.3 X
POWER SUPPLY	FUSE	WIRE
	70A	4 AWG
ELEMENTS	QTY	OHMS
(E-J-2300/4V)	6	7.23
(E-J-2300/40)	1	30.0
VOLTAGE	240 / 1 / 50-60	
KW	12.3	
FULL LOAD AMPS	L1	L2 L3
	51.3	51.3 X
POWER SUPPLY	FUSE	WIRE
	70A	4 AWG
ELEMENTS	QTY	OHMS
(E-J-2300/3V)	6	7.88
(E-J-2300/30)	1	32.7

THREE PHASE MODELS:

MODELS J230V-PB & JD230V-PB		
VOLTAGE	208 / 3 / 50-60	
KW	10.7	
FULL LOAD AMPS	L1	L2 L3
	31.7	25.4 31.7
POWER SUPPLY	FUSE	WIRE
	50A	6 AWG
ELEMENTS	QTY	OHMS
(E-J-2300/2V)	6	6.83
(E-J-2300/20)	1	28.4
VOLTAGE	220 / 3 / 50-60	
KW	11.3	
FULL LOAD AMPS	L1	L2 L3
	31.7	25.4 31.7
POWER SUPPLY	FUSE	WIRE
	50A	6 AWG
ELEMENTS	QTY	OHMS
(E-J-2300/4V)	6	7.23
(E-J-2300/40)	1	30.0
VOLTAGE	240 / 3 / 50-60	
KW	12.3	
FULL LOAD AMPS	L1	L2 L3
	31.7	25.4 31.7
POWER SUPPLY	FUSE	WIRE
	50A	6 AWG
ELEMENTS	QTY	OHMS
(E-J-2300/3V)	6	7.88
(E-J-2300/30)	1	32.7

1 PHASE CONTROL PANELS:

MODEL	(AUTO/MANUAL)	WIRING DIAGRAM
J230V-PB	(MANUAL)	K263-105
JD230V-PB	(AUTO)	K2632-155

3 PHASE CONTROL PANELS:

MODEL	(AUTO/MANUAL)	WIRING DIAGRAM
J230V-PB	(MANUAL)	K263-106
JD230V-PB	(AUTO)	K263-156



SEE CONTROL PANEL WIRING DIAGRAM FOR WIRING CONNECTIONS TO KILN ZONE RECEPTACLES

NOTES:

Industrial & commercial applications may require the installation of a LOCKOUT/TAGOUT device to prevent the Kiln from operating during maintenance.

This Kiln is recommended to be wired & connected to an approved U. L. & NEC configured disconnect switch and properly fused according to the KW

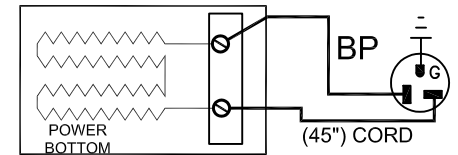
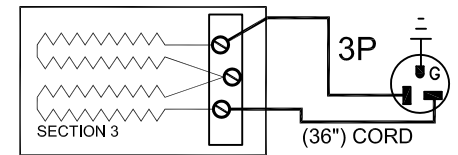
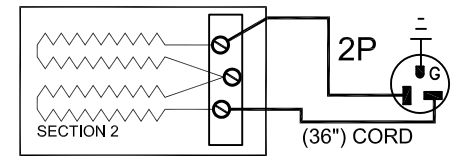
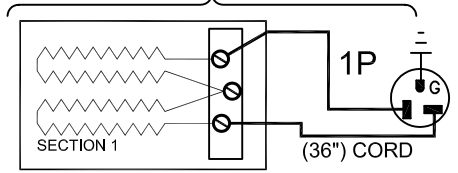
load specification listed on the Kiln Nameplate. L&L Kiln Mfg., Inc., also recommends fuses rather than circuit breakers to prevent nuisance tripping.

ELECTRICAL PARTS LIST

SYMBOL	QTY	DESCRIPTION	CUSTOMER PART NO.
1-3P	3	36" PLUGS NEMA 6-20P	L-J-JC36/00
BP	1	45" PLUGS NEMA 6-20P	L-J-JC45/00

KILN ASSEMBLY

SECTIONS CONTROLLED BY EACH OF THE 'DYNA-TROL' OUTPUTS:
OUTPUT #1 (TOP)
OUTPUT #2 (CENTER)
OUTPUT #3 (BOTTOM)
OUTPUT #4 (P.B.)



Output Numbers refer to Dyna-Trol Outputs on Automatic Kilns only.



CAUTION: DO NOT PLUG KILN SECTIONS DIRECTLY TO LINE VOLTAGE

REV#	DATE	REVISION DESCRIPTION
A	6/15/09	REPLACED UL MARK WITH MET CERTIFIED MARK & ADDED NEW LOGO
0	10/18/04	FIRST ISSUE

L&L Kilns
hotkilns.com
505 SHARPTOWN ROAD
SWEDESBORO, NJ 08085
PHONE: (856) 294-0077
FAX: (856) 294-0070

TITLE: **JUPITER KILN WIRING DIAGRAM
MODEL J230V-PB and JD230V-PB
FOR LARGE HEAVY-DUTY SERIES ELEMENTS
1 or 3 PHASE KILN ASSEMBLY
3 SECTIONS, With Power Bottom**

DRAWN BY	G.D.L.		REV. CODE	DRAWING NO.
DATE	10/18/04	SCALE	1 = 8	A
CHK	G.D.L.	APP		K037-121
JOB NO.	SER NO.		SHEET NO. 1 OF 1	
FILE NAME	L:\E\KILN\WIRING\KLN		MADE FROM	K037-111
	IK037-121.dwg			