

MODEL J230 & JD230			
VOLTAGE	380 / 3 / 50-60		
KW	9.68		
FULL LOAD	L1	L2	L3
AMPS	14.7	14.7	14.7
POWER SUPPLY	FUSE	WIRE	
	20A	10 AWG	
ELEMENTS (E-J-2300/40)	QTY	OHMS	
	6	30.0	

3 PHASE-WYE CONTROL PANELS:		
MODEL	(AUTO/ MANUAL)	WIRING DIAGRAM
J230	(MANUAL)	K262-109
JD230	(AUTO)	K262-167



SEE CONTROL PANEL WIRING DIAGRAM
FOR WIRING CONNECTIONS TO KILN
ZONE RECEPTACLES

NOTES:

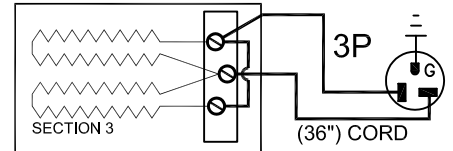
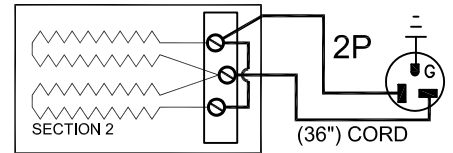
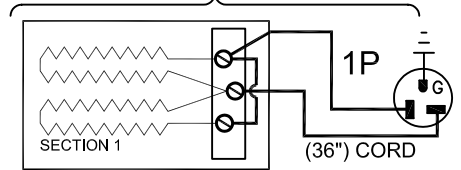
Industrial & commercial applications may require the installation of a LOCKOUT/TAGOUT device to prevent the Kiln from operating during maintenance.

This Kiln is recommended to be wired & connected to an approved U. L. & NEC configured disconnect switch and properly fused according to the KW load specification listed on the Kiln Nameplate. L&L Kiln Mfg., Inc., also recommends fuses rather than circuit breakers to prevent nuisance tripping.

ELECTRICAL PARTS LIST

SYMBOL	QTY	DESCRIPTION	CUSTOMER PART NO.
P	3	36" PLUGS NEMA 6-20P	L-J-JC36/00

KILN ASSEMBLY



SECTIONS CONTROLLED BY EACH OF THE 'DYNA-TROL' OUTPUTS:
OUTPUT #1 (TOP)
OUTPUT #2 (CENTER)
OUTPUT #3 (BOTTOM)

Output Numbers refer to Dyna-Trol Outputs on Automatic Kilns only.



**CAUTION: DO NOT PLUG
KILN SECTIONS DIRECTLY
TO LINE VOLTAGE**

REV#	DATE	REVISION DESCRIPTION
A	6/15/09	ADDED MET CERTIFIED MARK & NEW LOGO
0	2/9/04	FIRST ISSUE



505 SHARPTOWN ROAD
SWEDESBORO, NJ 08085
PHONE: (856) 294-0077
FAX: (856) 294-0070

TITLE **JUPITER KILN WIRING DIAGRAM
MODELS J230 and JD230
3 PHASE-WYE KILN ASSEMBLY
3 SECTIONS, No Power Bottom**

DRAWN BY	G.D.L.	REV. CODE	A	DRAWING NO.	K037-114
DATE	2/9/04	SCALE	1 = 8		
CHK	G.D.L.	APP			
JOB NO.		SER NO.		SHEET NO.	1 OF 1
FILE NAME	L:\E\11KILN\WIRDGKLN IK037-114.DWG	MADE FROM		USERIESIK043-113.dwg	