

**SINGLE PHASE MODELS:**

MODELS J23V-PB & JD23V-PB		
VOLTAGE	208 / 1 / 50-60	
KW	7.62	
FULL LOAD AMPS	L1	L2   L3
	36.6	36.6   <del>36.6</del>
POWER SUPPLY	FUSE	WIRE
	50A	6 AWG
ELEMENTS	QTY	OHMS
(E-J-2300/2V)	4	6.83
(E-J-2300/20)	1	28.4
VOLTAGE	220 / 1 / 50-60	
KW	8.06	
FULL LOAD AMPS	L1	L2   L3
	36.6	36.6   <del>36.6</del>
POWER SUPPLY	FUSE	WIRE
	50A	6 AWG
ELEMENTS	QTY	OHMS
(E-J-2300/4V)	4	7.23
(E-J-2300/40)	1	30.0
VOLTAGE	240 / 1 / 50-60	
KW	8.8	
FULL LOAD AMPS	L1	L2   L3
	36.6	36.6   <del>36.6</del>
POWER SUPPLY	FUSE	WIRE
	50A	6 AWG
ELEMENTS	QTY	OHMS
(E-J-2300/3V)	4	7.88
(E-J-2300/30)	1	32.7

**THREE PHASE MODELS:**

MODELS J23V-PB & JD23V-PB		
VOLTAGE	208 / 3 / 50-60	
KW	7.62	
FULL LOAD AMPS	L1	L2   L3
	19.1	25.4   19.1
POWER SUPPLY	FUSE	WIRE
	40A	8 AWG
ELEMENTS	QTY	OHMS
(E-J-2300/2V)	4	6.83
(E-J-2300/20)	1	28.4
VOLTAGE	220 / 3 / 50-60	
KW	8.06	
FULL LOAD AMPS	L1	L2   L3
	19.1	25.4   19.1
POWER SUPPLY	FUSE	WIRE
	40A	8 AWG
ELEMENTS	QTY	OHMS
(E-J-2300/4V)	4	7.23
(E-J-2300/40)	1	30.0
VOLTAGE	240 / 3 / 50-60	
KW	8.8	
FULL LOAD AMPS	L1	L2   L3
	19.1	25.4   19.1
POWER SUPPLY	FUSE	WIRE
	40A	8 AWG
ELEMENTS	QTY	OHMS
(E-J-2300/3V)	4	7.88
(E-J-2300/30)	1	32.7

**1 PHASE CONTROL PANELS:**

MODEL	(AUTO/MANUAL)	WIRING DIAGRAM
J23V-PB	(MANUAL)	K263-101
JD23V-PB	(AUTO)	K263-151

**3 PHASE CONTROL PANELS:**

MODEL	(AUTO/MANUAL)	WIRING DIAGRAM
J23V-PB	(MANUAL)	K263-102
JD23V-PB	(AUTO)	K263-152



**SEE CONTROL PANEL WIRING DIAGRAM FOR WIRING CONNECTIONS TO KILN ZONE RECEPTACLES**

**NOTES:**

Industrial & commercial applications may require the installation of a LOCKOUT/TAGOUT device to prevent the Kiln from operating during maintenance.

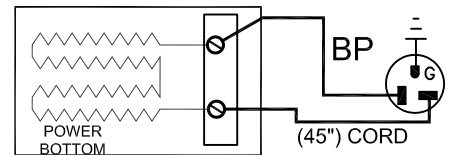
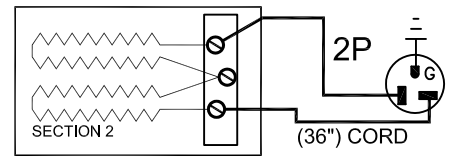
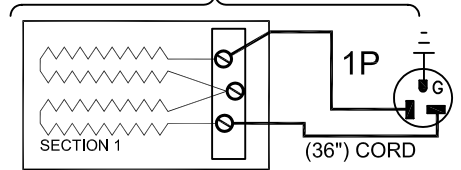
This Kiln is recommended to be wired & connected to an approved U. L. & NEC configured disconnect switch and properly fused according to the KW

load specification listed on the Kiln Nameplate. L&L Kiln Mfg., Inc., also recommends fuses rather than circuit breakers to prevent nuisance tripping.

**ELECTRICAL PARTS LIST**

SYMBOL	QTY	DESCRIPTION	CUSTOMER PART NO.
1-2P	2-3	36" PLUGS NEMA 6-20P	L-J-JC36/00
BP	1	45" PLUGS NEMA 6-20P	L-J-JC45/00

**KILN ASSEMBLY**



SECTIONS CONTROLLED BY EACH OF THE 'DYNA-TROL' OUTPUTS:  
OUTPUT #1 (TOP)  
OUTPUT #2 (BOTTOM)  
OUTPUT #4 (P.B.)

Output Numbers refer to Dyna-Trol Outputs on Automatic Kilns only.



**CAUTION: DO NOT PLUG KILN SECTIONS DIRECTLY TO LINE VOLTAGE**

REV#	DATE	REVISION DESCRIPTION
A	6/15/09	REPLACED UL MARK WITH MET CERTIFIED MARK & ADDED NEW LOGO
0	10/7/04	FIRST ISSUE

**L&L Kilns**  
hotkilns.com  
505 SHARPTOWN ROAD  
SWEDESBORO, NJ 08085  
PHONE: (856) 294-0077  
FAX: (856) 294-0070

TITLE: **JUPITER KILN WIRING DIAGRAM  
MODEL J23V-PB and JD23V-PB  
FOR LARGE HEAVY-DUTY SERIES ELEMENTS  
1 or 3 PHASE KILN ASSEMBLY  
2 SECTIONS, With Power Bottom**

DRAWN BY	G.D.L.	REV. CODE	DRAWING NO.
DATE	10/7/04	SCALE	1 = 8
CHK	G.D.L.	APP	A
JOB NO.		SER NO.	
FILE NAME	L1E1LLKILNWIRROGKLN IK035-121.dwg	MADE FROM	IK035-111