

SINGLE PHASE MODELS:

MODELS J23V & JD23V		
VOLTAGE	208 / 1 / 50-60	
KW	6.1	
FULL LOAD AMPS	L1	L2 L3
	29.3	29.3 X
POWER SUPPLY	FUSE	WIRE
	40A	8 AWG
ELEMENTS (E-J-2300/2V)	QTY	OHMS
	4	6.83
VOLTAGE	220 / 1 / 50-60	
KW	6.45	
FULL LOAD AMPS	L1	L2 L3
	29.3	29.3 X
POWER SUPPLY	FUSE	WIRE
	40A	8 AWG
ELEMENTS (E-J-2300/4V)	QTY	OHMS
	4	7.23
VOLTAGE	240 / 1 / 50-60	
KW	7.04	
FULL LOAD AMPS	L1	L2 L3
	29.3	29.3 X
POWER SUPPLY	FUSE	WIRE
	40A	8AWG
ELEMENTS (E-J-2300/3V)	QTY	OHMS
	4	7.88

THREE PHASE MODELS:

MODELS J23V & JD23V		
VOLTAGE	208 / 3 / 50-60	
KW	6.1	
FULL LOAD AMPS	L1	L2 L3
	14.7	25.4 14.7
POWER SUPPLY	FUSE	WIRE
	40A	8 AWG
ELEMENTS (E-J-2300/2V)	QTY	OHMS
	4	6.83
VOLTAGE	220 / 3 / 50-60	
KW	6.5	
FULL LOAD AMPS	L1	L2 L3
	14.7	25.4 14.7
POWER SUPPLY	FUSE	WIRE
	40A	8AWG
ELEMENTS (E-J-2300/4V)	QTY	OHMS
	4	7.23
VOLTAGE	240 / 3 / 50-60	
KW	7.0	
FULL LOAD AMPS	L1	L2 L3
	14.7	25.4 14.7
POWER SUPPLY	FUSE	WIRE
	40A	8 AWG
ELEMENTS (E-J-2300/3V)	QTY	OHMS
	4	7.88

1 PHASE CONTROL PANELS:

MODEL	(AUTO/MANUAL)	WIRING DIAGRAM
J23V	(MANUAL)	K262-101
JD23V	(AUTO)	K262-151

3 PHASE CONTROL PANELS:

MODEL	(AUTO/MANUAL)	WIRING DIAGRAM
J23V	(MANUAL)	K262-102
JD23V	(AUTO)	K262-152



SEE CONTROL PANEL WIRING DIAGRAM FOR WIRING CONNECTIONS TO KILN ZONE RECEPTACLES

NOTES:

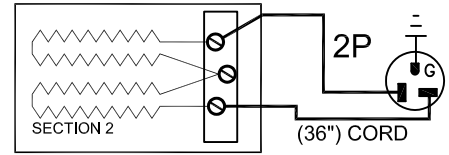
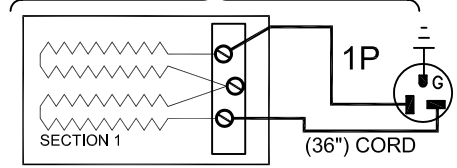
Industrial & commercial applications may require the installation of a LOCKOUT/TAGOUT device to prevent the Kiln from operating during maintenance.

This Kiln is recommended to be wired & connected to an approved U. L. & NEC configured disconnect switch and properly fused according to the KW load specification listed on the Kiln Nameplate. L&L Kiln Mfg., Inc., also recommends fuses rather than circuit breakers to prevent nuisance tripping.

ELECTRICAL PARTS LIST

SYMBOL	QTY	DESCRIPTION	CUSTOMER PART NO.
P	2-3	36" PLUGS NEMA 6-20P	L-J-JC36/00
.	.	.	.
.	.	.	.

KILN ASSEMBLY



SECTIONS CONTROLLED BY EACH OF THE 'DYNA-TROL' OUTPUTS:
OUTPUT #1 (TOP)
OUTPUT #2 (BOTTOM)

Output Numbers refer to Dyna-Trol Outputs on Automatic Kilns only.



CAUTION: DO NOT PLUG KILN SECTIONS DIRECTLY TO LINE VOLTAGE

REV#	DATE	REVISION DESCRIPTION
A	6/15/09	REPLACED UL MARK WITH MET CERTIFIED MARK & ADDED NEW LOGO
0	10/4/04	FIRST ISSUE

L&L Kilns
hotkilns.com
505 SHARPTOWN ROAD
SWEDESBORO, NJ 08085
PHONE: (856) 294-0077
FAX: (856) 294-0070

TITLE: **JUPITER KILN WIRING DIAGRAM
MODEL J23V and JD23V
FOR LARGE HEAVY-DUTY SERIES ELEMENTS
1 or 3 PHASE KILN ASSEMBLY
2 SECTIONS, No Power Bottom**

DRAWN BY	G.D.L.	REV. CODE	DRAWING NO.
DATE	10/4/04	SCALE	1 = 8
CHK	G.D.L.	APP	A
JOB NO.	SER NO.	SHEET NO.	1 OF 1
FILE NAME	L:\E\KILN\WIRING\KLN IK035-120.dwg	MADE FROM	IK035-110