

MODEL J23-PB & JD23-PB			
VOLTAGE	380 / 3 / 50-60		
KW	8.06		
FULL LOAD AMPS	L1	L2	L3
	14.7	14.7	7.33
POWER SUPPLY	FUSE	WIRE	
	20A	10 AWG	
ELEMENTS (E-J-2300/40)	QTY	OHMS	
	5	30.0	

3 PHASE-WYE CONTROL PANELS:		
MODEL	(AUTO/ MANUAL)	WIRING DIAGRAM
J23-PB	(MANUAL)	K263-111
JD23-PB	(AUTO)	K263-171



SEE CONTROL PANEL WIRING DIAGRAM
FOR WIRING CONNECTIONS TO KILN
ZONE RECEPTACLES

NOTES:

Industrial & commercial applications may require the installation of a LOCKOUT/TAGOUT device to prevent the Kiln from operating during maintenance.

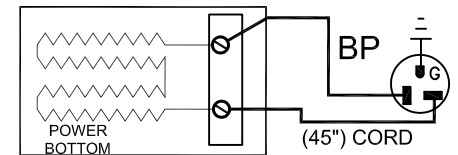
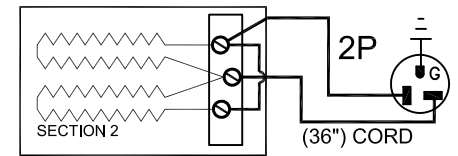
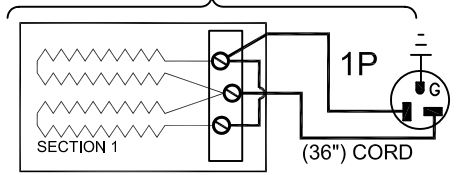
This Kiln is recommended to be wired & connected to an approved U. L. & NEC configured disconnect switch and properly fused according to the KW load specification listed on the Kiln Nameplate. L&L Kiln Mfg., Inc., also recommends fuses rather than circuit breakers to prevent nuisance tripping.

ELECTRICAL PARTS LIST

SYMBOL	QTY	DESCRIPTION	CUSTOMER PART NO.
1-2P	2	36" PLUGS NEMA 6-20P	L-J-JC36/00
BP	1	45" PLUG NEMA 6-20P	L-J-JC45/00

KILN ASSEMBLY

SECTIONS CONTROLLED BY EACH OF THE 'DYNA-TROL' OUTPUTS:
OUTPUT #1 (TOP)
OUTPUT #2 (BOTTOM)
OUTPUT #4 (P.B.)



Output Numbers refer to Dyna-Trol Outputs on Automatic Kilns only.



**CAUTION: DO NOT PLUG
KILN SECTIONS DIRECTLY
TO LINE VOLTAGE**

REV#	DATE	REVISION DESCRIPTION
A	6/15/09	ADDED MET CERTIFIED MARK & NEW LOGO
0	2/14/06	FIRST RELEASE

L&L Kilns
hotkilns.com
505 SHARPTOWN ROAD
SWEDESBORO, NJ 08085
PHONE: (856) 294-0077
FAX: (856) 294-0070

TITLE **JUPITER KILN WIRING DIAGRAM
MODELS J23-PB and JD23-PB
3 PHASE-WYE KILN ASSEMBLY
2 SECTIONS, With Power Bottom**

DRAWN BY	G.D.L.	REV. CODE	A	DRAWING NO.	K035-113
DATE	2/14/06	SCALE	1 = 8		
CHK	G.D.L.	APP			
JOB NO.	SER NO.		SHEET NO. OF		
FILE NAME	L:\EVL\KILN\WIRDGKLN\K035-113.DWG		MADE FROM	WIRDGKLN\K035-111.dwg	