

MODEL J18X & JD18X			
VOLTAGE	380 / 3 / 50-60		
KW	8.28		
FULL LOAD	L1	L2	L3
AMPS	12.5	12.5	12.5
POWER	FUSE	WIRE	
SUPPLY	20A	10 AWG	
ELEMENTS	QTY	OHMS	
(E-J-1800/40)	6	8.8	

3 PHASE-WYE CONTROL PANELS:		
MODEL	(AUTO/ MANUAL)	WIRING DIAGRAM
J18X	(MANUAL)	K262-109
JD18X	(AUTO)	K262-167



**SEE CONTROL PANEL WIRING DIAGRAM
FOR WIRING CONNECTIONS TO KILN
ZONE RECEPTACLES**

NOTES:

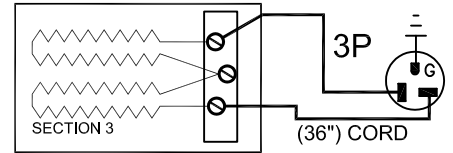
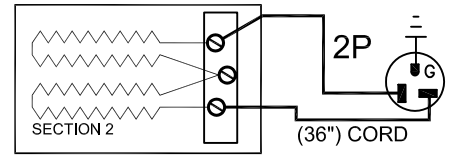
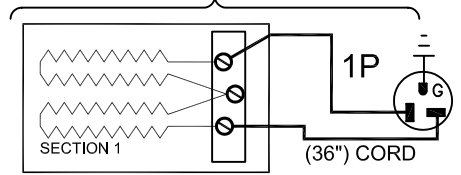
Industrial & commercial applications may require the installation of a LOCKOUT/TAGOUT device to prevent the Kiln from operating during maintenance.

This Kiln is recommended to be wired & connected to an approved U. L. & NEC configured disconnect switch and properly fused according to the KW load specification listed on the Kiln Nameplate. L&L Kiln Mfg., Inc., also recommends fuses rather than circuit breakers to prevent nuisance tripping.

ELECTRICAL PARTS LIST

SYMBOL	QTY	DESCRIPTION	CUSTOMER PART NO.
P	3	36" PLUGS NEMA 6-20P	L-J-JC36/00

KILN ASSEMBLY



SECTIONS CONTROLLED BY EACH OF THE 'DYNA-TROL' OUTPUTS:
OUTPUT #1 (TOP)
OUTPUT #2 (CENTER)
OUTPUT #3 (BOTTOM)

Output Numbers refer to Dyna-Trol Outputs on Automatic Kilns only.



**CAUTION: DO NOT PLUG
KILN SECTIONS DIRECTLY
TO LINE VOLTAGE**

REV#	DATE	REVISION DESCRIPTION
A	6/15/09	ADDED MET CERTIFIED MARK
0	10/29/08	FIRST ISSUE



505 SHARPTOWN ROAD
SWEDESBORO, NJ 08085
PHONE: (856) 294-0077
FAX: (856) 294-0070

TITLE **JUPITER KILN WIRING DIAGRAM
MODELS J18X and JD18X
3 PHASE-WYE KILN ASSEMBLY
3 SECTIONS, No Power Bottom**

DRAWN BY	G.D.L.	REV. CODE	A	DRAWING NO.	K037-111
DATE	10/29/08	SCALE	1 = 8		
CHK	G.D.L.	APP			
JOB NO.		SER NO.		SHEET NO.	1 OF 1
FILE NAME	L:\EVL\KILN\WIRDGKLN IK032-111.DWG	MADE FROM			K037-114.dwg