

**SINGLE PHASE MODELS:**

MODEL JD230S-PB	
VOLTAGE	208 / 1 / 50-60
KW	12.6
FULL LOAD AMPS	L1   L2   L3 60.6   60.6   X
POWER SUPPLY	FUSE   WIRE 80A   3 AWG
ELEMENTS (E-J-230S/20)	QTY   OHMS 7   24.0
VOLTAGE	220 / 1 / 50-60
KW	13.3
FULL LOAD AMPS	L1   L2   L3 60.5   60.5   X
POWER SUPPLY	FUSE   WIRE 80A   3 AWG
ELEMENTS (E-J-230S/40)	QTY   OHMS 7   25.5
VOLTAGE	240 / 1 / 50-60
KW	14.5
FULL LOAD AMPS	L1   L2   L3 60.5   60.5   X
POWER SUPPLY	FUSE   WIRE 80A   3 AWG
ELEMENTS (E-J-230S/30)	QTY   OHMS 7   27.8

**THREE PHASE MODELS:**

MODEL JD230S-PB	
VOLTAGE	208 / 3 / 50-60
KW	12.6
FULL LOAD AMPS	L1   L2   L3 37.5   30.0   37.5
POWER SUPPLY	FUSE   WIRE 50A   6 AWG
ELEMENTS (E-J-230S/20)	QTY   OHMS 7   24.0
VOLTAGE	220 / 3 / 50-60
KW	13.3
FULL LOAD AMPS	L1   L2   L3 37.4   30.0   37.4
POWER SUPPLY	FUSE   WIRE 50A   6 AWG
ELEMENTS (E-J-230S/40)	QTY   OHMS 7   25.5
VOLTAGE	240 / 3 / 50-60
KW	14.5
FULL LOAD AMPS	L1   L2   L3 37.4   30.0   37.4
POWER SUPPLY	FUSE   WIRE 50A   6 AWG
ELEMENTS (E-J-230S/30)	QTY   OHMS 7   27.8

**1 PHASE CONTROL PANELS:**

MODEL	(AUTO/MANUAL)	WIRING DIAGRAM
JD230S-PB	(AUTO)	K263-155

**3 PHASE CONTROL PANELS:**

MODEL	(AUTO/MANUAL)	WIRING DIAGRAM
JD230S-PB	(AUTO)	K263-156



**SEE CONTROL PANEL WIRING DIAGRAM FOR WIRING CONNECTIONS TO KILN ZONE RECEPTACLES**

**NOTES:**

Industrial & commercial applications may require the installation of a LOCKOUT/TAGOUT device to prevent the Kiln from operating during maintenance.

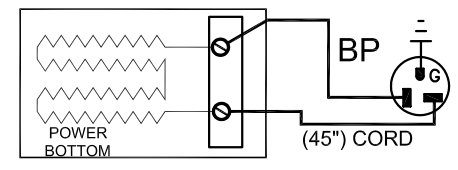
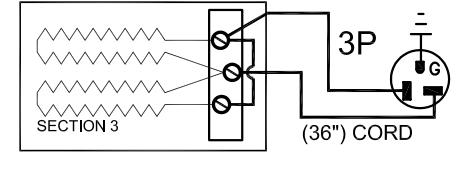
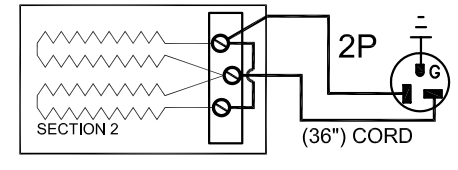
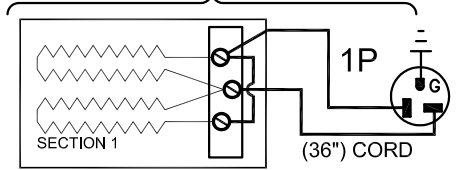
This Kiln is recommended to be wired & connected to an approved U. L. & NEC configured disconnect switch and properly fused according to the KW load specification listed on the Kiln Nameplate. L&L Kiln Mfg., Inc., also recommends fuses rather than circuit breakers to prevent nuisance tripping.

**ELECTRICAL PARTS LIST**

SYMBOL	QTY	DESCRIPTION	CUSTOMER PART NO.
1-3P	3	36" PLUGS NEMA 6-20P	L-J-JC36/00
BP	1	45" PLUGS NEMA 6-20P	L-J-JC45/00

**KILN ASSEMBLY**

SECTIONS CONTROLLED BY EACH OF THE 'DYNA-TROL' OUTPUTS:  
OUTPUT #1 (TOP)  
OUTPUT #2 (CENTER)  
OUTPUT #3 (BOTTOM)  
OUTPUT #B (PWR BOT)



Output Numbers refer to Dyna-Trol Outputs on Automatic Kilns only.



**CAUTION: DO NOT PLUG KILN SECTIONS DIRECTLY TO LINE VOLTAGE**

REV#	DATE	REVISION DESCRIPTION
A	10/23/09	REPLACED UL MARK WITH MET CERTIFIED MARK & ADDED NEW LOGO
0	8/8/02	MISC CORRECTIONS FOR RELEASE / DISCONTINUED HAND-HELD

**L Kilns** hotkilns.com  
505 SHARPTOWN ROAD SWEDESBORO, NJ 08085  
PHONE: (856) 294-0077 FAX: (856) 294-0070

TITLE **JUPITER KILN WIRING DIAGRAM MODEL JD230S-PB**  
**1 or 3 PHASE KILN ASSEMBLY**  
**3 SECTIONS, With Power Bottom**

DRAWN BY <b>G.W.L.</b>	REV. CODE <b>A</b>	DRAWING NO. <b>K037-113</b>
DATE <b>01/09/01</b>	SCALE <b>1 = 8</b>	
CHK <b>G.D.L.</b>	APP	
JOB NO	SER NO	SHEET NO.   OF
FILE NAME <b>L:\E\11\KILN\WIRING\K037-113.dwg</b>	MADE FROM	USERIES\K038-102.dwg