

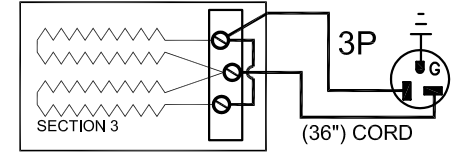
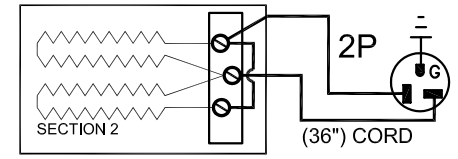
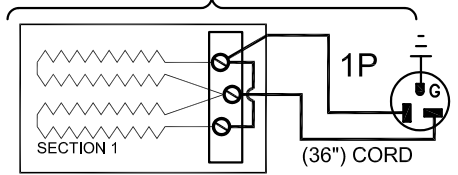
**SINGLE PHASE MODELS:**

MODEL JD230S	
VOLTAGE	208 / 1 / 50-60
KW	10.8
FULL LOAD AMPS	L1   L2   L3 51.9   51.9   X
POWER SUPPLY	FUSE   WIRE 70A   4 AWG
ELEMENTS (E-J-230S/20)	QTY   OHMS 6   24.0
VOLTAGE	220 / 1 / 50-60
KW	11.4
FULL LOAD AMPS	L1   L2   L3 51.9   51.9   X
POWER SUPPLY	FUSE   WIRE 70A   4 AWG
ELEMENTS (E-J-230S/40)	QTY   OHMS 6   25.5
VOLTAGE	240 / 1 / 50-60
KW	12.5
FULL LOAD AMPS	L1   L2   L3 51.9   51.9   X
POWER SUPPLY	FUSE   WIRE 70A   4 AWG
ELEMENTS (E-J-230S/30)	QTY   OHMS 6   27.8

**THREE PHASE MODELS:**

MODEL JD230S	
VOLTAGE	208 / 3 / 50-60
KW	10.8
FULL LOAD AMPS	L1   L2   L3 30.0   30.0   30.0
POWER SUPPLY	FUSE   WIRE 40A   8 AWG
ELEMENTS (E-J-230S/20)	QTY   OHMS 6   24.0
VOLTAGE	220 / 3 / 50-60
KW	11.4
FULL LOAD AMPS	L1   L2   L3 30.0   30.0   30.0
POWER SUPPLY	FUSE   WIRE 40A   8 AWG
ELEMENTS (E-J-230S/40)	QTY   OHMS 6   25.5
VOLTAGE	240 / 3 / 50-60
KW	12.5
FULL LOAD AMPS	L1   L2   L3 30.0   30.0   30.0
POWER SUPPLY	FUSE   WIRE 40A   8 AWG
ELEMENTS (E-J-230S/30)	QTY   OHMS 6   27.8

**KILN ASSEMBLY**



SECTIONS CONTROLLED BY EACH OF THE 'DYNA-TROL' OUTPUTS:  
OUTPUT #1 (TOP)  
OUTPUT #2 (CENTER)  
OUTPUT #3 (BOTTOM)

**1 PHASE CONTROL PANELS:**

MODEL	(AUTO/MANUAL)	WIRING DIAGRAM
JD230S	(AUTO)	K262-153

**3 PHASE CONTROL PANELS:**

MODEL	(AUTO/MANUAL)	WIRING DIAGRAM
JD230S	(AUTO)	K262-154



**SEE CONTROL PANEL WIRING DIAGRAM FOR WIRING CONNECTIONS TO KILN ZONE RECEPTACLES**

**NOTES:**

Industrial & commercial applications may require the installation of a LOCKOUT/TAGOUT device to prevent the Kiln from operating during maintenance.

This Kiln is recommended to be wired & connected to an approved U. L. & NEC configured disconnect switch and properly fused according to the KW load specification listed on the Kiln Nameplate. L&L Kiln Mfg., Inc., also recommends fuses rather than circuit breakers to prevent nuisance tripping.

Output Numbers refer to Dyna-Trol Outputs on Automatic Kilns only.



**CAUTION: DO NOT PLUG KILN SECTIONS DIRECTLY TO LINE VOLTAGE**

REV#	DATE	REVISION DESCRIPTION
A	10/23/09	REPLACED UL MARK WITH MET CERTIFIED MARK & ADDED NEW LOGO
0	9/6/01	MISC CORRECTIONS FOR RELEASE / DISCONTINUED HAND-HELD

**L Kilns**  
hotkilns.com  
505 SHARPTOWN ROAD  
SWEDESBORO, NJ 08065  
PHONE: (856) 294-0077  
FAX: (856) 294-0070

TITLE **JUPITER KILN WIRING DIAGRAM  
MODEL JD230S  
1 or 3 PHASE KILN ASSEMBLY  
3 SECTIONS, No Power Bottom**

**ELECTRICAL PARTS LIST**

SYMBOL	QTY	DESCRIPTION	CUSTOMER PART NO.
P	3	36" PLUGS NEMA 6-20P	L-J-JC36/00

DRAWN BY	G.W.L.	REV. CODE	A	DRAWING NO.	K037-112
DATE	01/09/01	SCALE	1 = 8		
CHK	G.D.L.	APP			
JOB NO.		SER NO.		SHEET NO.	1 OF 1
FILE NAME	L:\E\111KILN\WIRING\K037-112.dwg	MADE FROM		USERIES\K035-100.dwg	