

**SINGLE PHASE MODELS:**

MODELS J230-PB & JD230-PB	
VOLTAGE	208 / 1 / 50-60
KW	10.7
FULL LOAD AMPS	L1   L2   L3
	51.3   51.3   X
POWER SUPPLY	FUSE   WIRE
	70A   4 AWG
ELEMENTS (E-J-2300/20)	QTY   OHMS
	7   28.4
VOLTAGE	220 / 1 / 50-60
KW	11.3
FULL LOAD AMPS	L1   L2   L3
	51.3   51.3   X
POWER SUPPLY	FUSE   WIRE
	70A   4 AWG
ELEMENTS (E-J-2300/40)	QTY   OHMS
	7   30.0
VOLTAGE	240 / 1 / 50-60
KW	12.3
FULL LOAD AMPS	L1   L2   L3
	51.3   51.3   X
POWER SUPPLY	FUSE   WIRE
	70A   4 AWG
ELEMENTS (E-J-2300/30)	QTY   OHMS
	7   32.7

**THREE PHASE MODELS:**

MODELS J230-PB & JD230-PB	
VOLTAGE	208 / 3 / 50-60
KW	10.7
FULL LOAD AMPS	L1   L2   L3
	31.7   25.4   31.7
POWER SUPPLY	FUSE   WIRE
	50A   6 AWG
ELEMENTS (E-J-2300/20)	QTY   OHMS
	7   28.4
VOLTAGE	220 / 3 / 50-60
KW	11.3
FULL LOAD AMPS	L1   L2   L3
	31.7   25.4   31.7
POWER SUPPLY	FUSE   WIRE
	50A   6 AWG
ELEMENTS (E-J-2300/40)	QTY   OHMS
	7   30.0
VOLTAGE	240 / 3 / 50-60
KW	12.3
FULL LOAD AMPS	L1   L2   L3
	31.7   25.4   31.7
POWER SUPPLY	FUSE   WIRE
	50A   6 AWG
ELEMENTS (E-J-2300/30)	QTY   OHMS
	7   32.7

**1 PHASE CONTROL PANELS:**

MODEL	(AUTO/MANUAL)	WIRING DIAGRAM
J230-PB	(MANUAL)	K263-105
JD230-PB	(AUTO)	K263-155

**3 PHASE CONTROL PANELS:**

MODEL	(AUTO/MANUAL)	WIRING DIAGRAM
J230-PB	(MANUAL)	K263-106
JD230-PB	(AUTO)	K263-156



**SEE CONTROL PANEL WIRING DIAGRAM FOR WIRING CONNECTIONS TO KILN ZONE RECEPTACLES**

**NOTES:**

Industrial & commercial applications may require the installation of a LOCKOUT/TAGOUT device to prevent the Kiln from operating during maintenance.

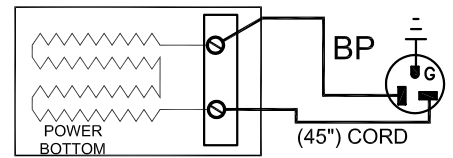
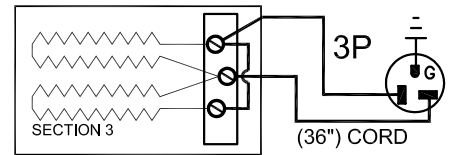
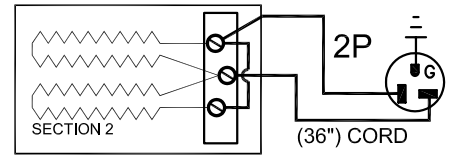
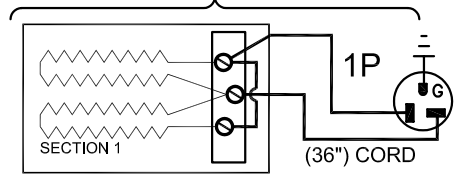
This Kiln is recommended to be wired & connected to an approved U. L. & NEC configured disconnect switch and properly fused according to the KW load specification listed on the Kiln Nameplate. L&L Kiln Mfg., Inc., also recommends fuses rather than circuit breakers to prevent nuisance tripping.

**ELECTRICAL PARTS LIST**

SYMBOL	QTY	DESCRIPTION	CUSTOMER PART NO.
1-3P	3	36" PLUGS NEMA 6-20P	L-J-JC36/00
BP	1	45" PLUGS NEMA 6-20P	L-J-JC45/00

**KILN ASSEMBLY**

SECTIONS CONTROLLED BY EACH OF THE 'DYNA-TROL' OUTPUTS:  
OUTPUT #1 (TOP)  
OUTPUT #2 (CENTER)  
OUTPUT #3 (BOTTOM)  
OUTPUT #4 (P.B.)



Output Numbers refer to Dyna-Trol Outputs on Automatic Kilns only.



**CAUTION: DO NOT PLUG KILN SECTIONS DIRECTLY TO LINE VOLTAGE**

REV#	DATE	REVISION DESCRIPTION
A	10/23/09	REPLACED UL MARK WITH MET CERTIFIED MARK & ADDED NEW LOGO
0	9/12/02	MISC CORRECTIONS FOR RELEASE / DISCONTINUED HAND-HELD

**L Kilns**  
hotkilns.com  
505 SHARPTOWN ROAD  
SWEDESBORO, NJ 08085  
PHONE: (856) 294-0077  
FAX: (856) 294-0070

TITLE: **JUPITER KILN WIRING DIAGRAM**  
**MODELS J230-PB and JD230-PB**  
**1 or 3 PHASE KILN ASSEMBLY**  
**3 SECTIONS, With Power Bottom**

DRAWN BY	G.W.L.	REV. CODE	A	DRAWING NO.	K037-111
DATE	1/09/01	SCALE	1 = 8	SHEET NO.	1 OF 1
CHK	G.D.L.	APP		FILE NAME	L:\E\11\KILN\WIRING\KLN\K037-111.DWG
JOB NO		SER NO		MADE FROM	USERIES\K038-102.dwg