

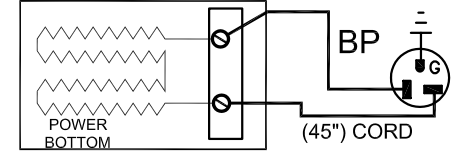
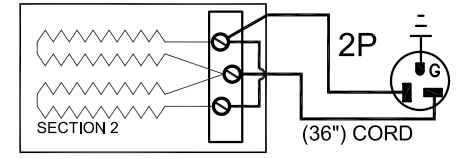
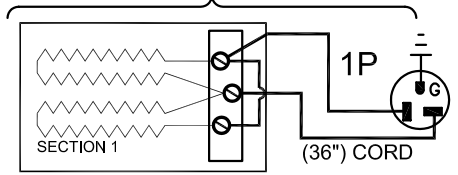
**SINGLE PHASE MODELS:**

MODELS JD23-PB & JD23-PB			
VOLTAGE	208 / 1 / 50-60		
KW	7.62		
FULL LOAD AMPS	L1	L2	L3
	36.6	36.6	∞
POWER SUPPLY	FUSE	WIRE	
	50A	6 AWG	
ELEMENTS (E-J-2300/20)	QTY	OHMS	
	5	28.4	
VOLTAGE	220 / 1 / 50-60		
KW	8.06		
FULL LOAD AMPS	L1	L2	L3
	36.6	36.6	∞
POWER SUPPLY	FUSE	WIRE	
	50A	6 AWG	
ELEMENTS (E-J-2300/40)	QTY	OHMS	
	5	30.0	
VOLTAGE	240 / 1 / 50-60		
KW	8.8		
FULL LOAD AMPS	L1	L2	L3
	36.6	36.6	∞
POWER SUPPLY	FUSE	WIRE	
	50A	6 AWG	
ELEMENTS (E-J-2300/30)	QTY	OHMS	
	5	32.7	

**THREE PHASE MODELS:**

MODELS J23-PB & JD23-PB			
VOLTAGE	208 / 3 / 50-60		
KW	7.62		
FULL LOAD AMPS	L1	L2	L3
	19.1	25.4	19.1
POWER SUPPLY	FUSE	WIRE	
	40A	8 AWG	
ELEMENTS (E-J-2300/20)	QTY	OHMS	
	5	28.4	
VOLTAGE	220 / 3 / 50-60		
KW	8.06		
FULL LOAD AMPS	L1	L2	L3
	19.1	25.4	19.1
POWER SUPPLY	FUSE	WIRE	
	40A	8 AWG	
ELEMENTS (E-J-2300/40)	QTY	OHMS	
	5	30.0	
VOLTAGE	240 / 3 / 50-60		
KW	8.8		
FULL LOAD AMPS	L1	L2	L3
	19.1	25.4	19.1
POWER SUPPLY	FUSE	WIRE	
	40A	8 AWG	
ELEMENTS (E-J-2300/30)	QTY	OHMS	
	5	32.7	

**KILN ASSEMBLY**



SECTIONS CONTROLLED BY EACH OF THE 'DYNA-TROL' OUTPUTS:  
OUTPUT #1 (TOP)  
OUTPUT #2 (BOTTOM)  
OUTPUT #4 (P.B.)

**1 PHASE CONTROL PANELS:**

**3 PHASE CONTROL PANELS:**

MODEL	(AUTO/MANUAL)	WIRING DIAGRAM	MODEL	(AUTO/MANUAL)	WIRING DIAGRAM
J23-PB	(MANUAL)	K263-101	J23-PB	(MANUAL)	K263-102
JD23-PB	(AUTO)	K263-151	JD23-PB	(AUTO)	K263-152



**SEE CONTROL PANEL WIRING DIAGRAM FOR WIRING CONNECTIONS TO KILN ZONE RECEPTACLES**

**NOTES:**

Industrial & commercial applications may require the installation of a LOCKOUT/TAGOUT device to prevent the Kiln from operating during maintenance.

This Kiln is recommended to be wired & connected to an approved U. L. & NEC configured disconnect switch and properly fused according to the KW load specification listed on the Kiln Nameplate. L&L Kiln Mfg., Inc., also recommends fuses rather than circuit breakers to prevent nuisance tripping.

Output Numbers refer to Dyna-Trol Outputs on Automatic Kilns only.



**CAUTION: DO NOT PLUG KILN SECTIONS DIRECTLY TO LINE VOLTAGE**

REV#	DATE	REVISION DESCRIPTION
A	10/23/09	REPLACED UL MARK WITH MET CERTIFIED MARK & ADDED NEW LOGO
1	9/5/02	FURTHER MISC CORRECTIONS FOR RELEASE / DISCT'D HAND-HELD
0	9/1/01	MISC CORRECTIONS FOR RELEASE

**L Kilns** hotkilns.com  
505 SHARPTOWN ROAD  
SWEDESBORO, NJ 08085  
PHONE: (856) 294-0077  
FAX: (856) 294-0070

TITLE: **JUPITER KILN WIRING DIAGRAM  
MODELS J23-PB and JD23-PB  
1 or 3 PHASE KILN ASSEMBLY  
2 SECTIONS, With Power Bottom**

**ELECTRICAL PARTS LIST**

SYMBOL	QTY	DESCRIPTION	CUSTOMER PART NO.
1-2P	2	36" PLUGS NEMA 6-20P	L-J-JC36/00
BP	1	45" PLUG NEMA 6-20P	L-J-JC45/00

DRAWN BY: <b>G.D.L.</b>	REV. CODE: <b>A</b>	DRAWING NO.: <b>K035-111</b>
DATE: <b>01/09/01</b>	SCALE: <b>1 = 8</b>	
CHK: <b>G.D.L.</b>	APP: <b>.</b>	
JOB NO.	SER NO.	SHEET NO. <b>1</b> OF <b>1</b>
FILE NAME: <b>L:\EVLKILN\WIRDGKLN\K035-111.DWG</b>	MADE FROM	USERIES\K035-102.dwg