

NOTES:

Control Wire:
16 AWG, 105°C
Power Wire:
10 AWG, 150°C

Industrial & commercial applications may require the installation of a LOCKOUT/TAGOUT device to prevent the Kiln from operating during maintenance.

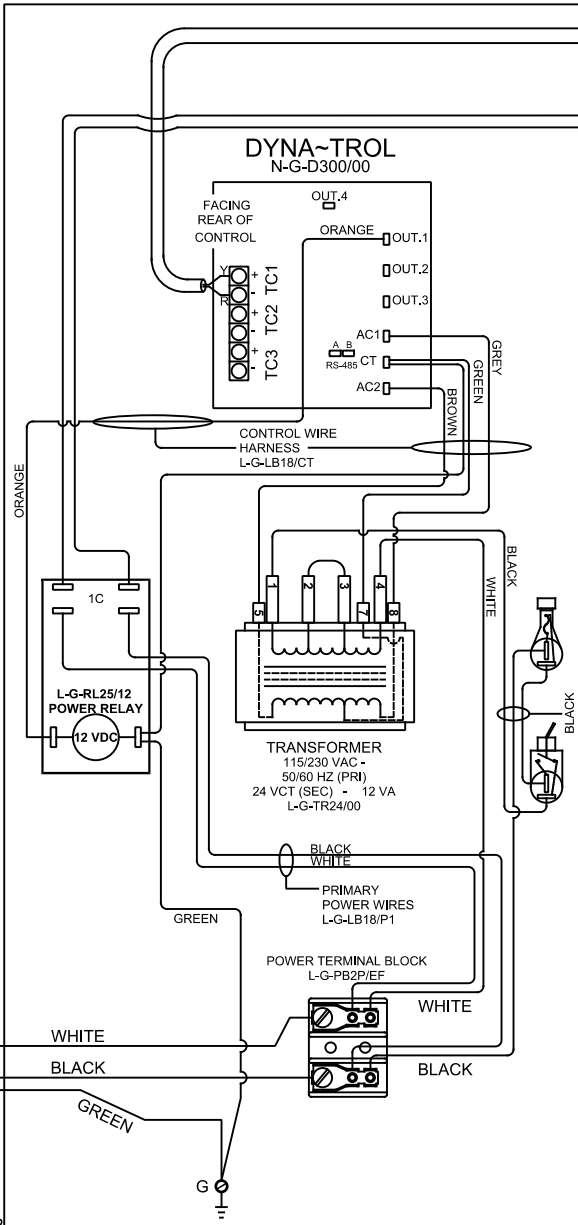
This Kiln is recommended to be wired & connected to an approved U. L. & NEC configured receptacle controlled with a disconnect switch and properly fused according to the KW load specification listed on the Kiln Nameplate. L&L Kiln Mfg., Inc., also recommends fuses rather than circuit breakers to prevent nuisance tripping.



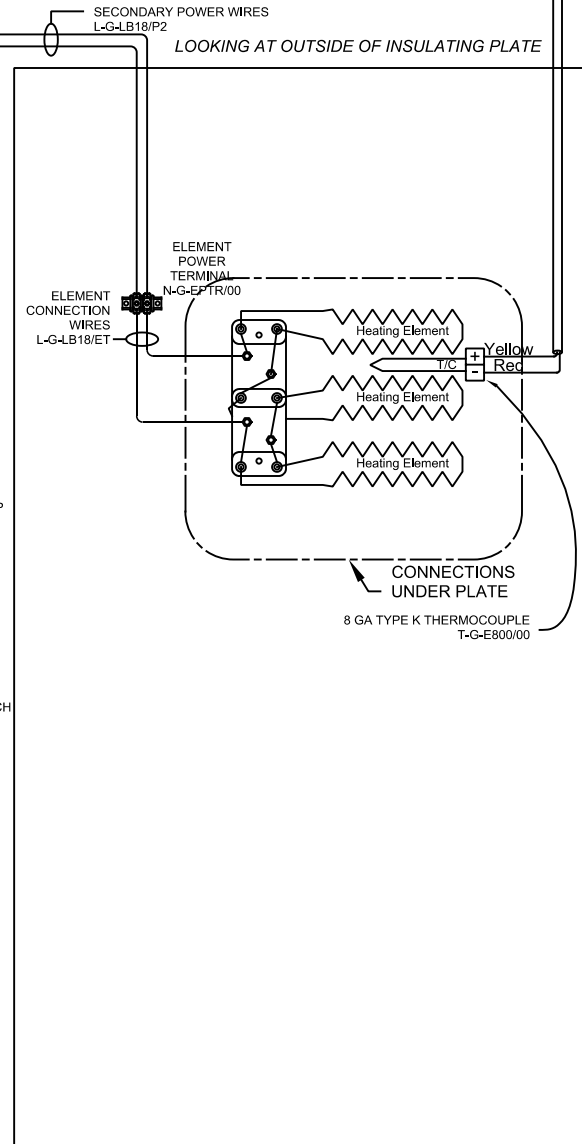
PLUG
5-20P NEMAV(120V)
P/N L-G-PC15/00

SAFETY SWITCH BY CUSTOMER
Connect to
120 Volt, 20 Amp Circuit
50 or 60 Cycles.

LOOKING INSIDE CONTROL PANEL



T/C WIRE - T-G-LB18/HT



**Model DL11-D
120 Volts**

VOLTAGE	120 / 1 / 50-60		
WATTS	1800		
FULL LOAD AMPS	L1	L2	L3
	15.0	15.0	X
POWER SUPPLY	FUSE	WIRE	
	20A	16 AWG	
ELEMENTS E-D-DL1S/10	QTY	OHMS	
	3	2.5	

REV.#	DATE	REVISION DESCRIPTION